

TRIP PLANNING CONSIDERATIONS



1. Know your hazards



2. Build your plan



3. Gather your supplies

Step 1. Know your tsunami risk in each area you run trips

- Exposed outer coast? → *get off water, hike to high ground*
- Inland/protected waters? → *get off water after earthquake, monitor radio for tide and current changes*
- Inlets? → *consider additional landslide-induced tsunami risk*

Step 2. Make your tsunami response plan, and consider

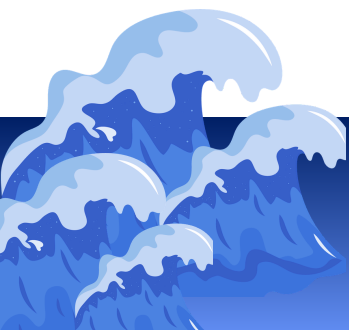
- **Communication:** How will you be notified that a tsunami is coming?
 - Sign up for & get familiar with Alertable (or local equivalent)
 - Make a habit of monitoring VHF Ch. 16, especially during launches, landing, and crossings
 - Consider purchasing a radio equipped with the 'alert' feature

→ **Have you made plans to receive forwarded notifications and alerts from your base?**

- **Sheltering guests.** Tourists aren't eligible for Emergency Support Services during a major disaster--they are now your (company's) responsibility. How will you house/support them until they can return home?
- **Evacuation routes** at each campsite & during crossings/long on-water days: How are you getting to high ground? Can you pre-plan your evacuation 'muster points'?

Step 3. Practice your plan and gather your supplies

- Build tsunami preparedness into **pre-season training**.
- Include tsunami evacuation into **pre-trip weather contingency planning**.
- Consider mentioning tsunami evacuation in **pre-trip talk**. Have guests identify and locate their 'grab and go bag' in case they need to extract it and evacuate quickly to high ground.



ESTIMATED WAVE HEIGHT & ARRIVAL TIME FOR DISTANT & LOCALLY-GENERATED TSUNAMIS



STRATHCONA REGIONAL DISTRICT, WEST COAST COMMUNITIES

Community	Distant (Alaska Earthquake) Tsunami Arrival Time	Inundation Level	Local (Cascadia Earthquake) Tsunami Arrival Time	Inundation Level
Kyuquot	3 hours 4 minutes	4.7 meters	25 minutes	12.4 meters
Fair Harbour	3 hours 18 minutes	5.1 meters	45 minutes	6.8 meters
Oclucje	3 hours 20 minutes	3.4 meters	38 minutes	10.9 meters
Zebellos/Ehatis	3 hours 31 minutes	3.9 meters	46 minutes	6.8 meters
Tahsis	3 hours 41 minutes	5 meters	54 minutes	7.5 meters
Gold River Waterfront	3 hours 44 minutes	6.8 meters	59 minutes	11.2 meters
Yuquot	3 hours 36 minutes	2.9 meters	28 minutes	11.9 meters

TSUNAMI ALERT LEVELS EXPLAINED

LEVEL	THREAT	ACTION
WARNING	Dangerous coastal flooding & powerful currents are imminent. West coast communities will be flooded.	Go to high ground immediately. If possible, evacuate to muster site.
ADVISORY	An advisory is issued due to the threat of a tsunami with potential to produce strong, dangerous currents.	Stay out of water & above high tide line. Secure boats.
WATCH	A distant earthquake has occurred, and a tsunami is possible. Danger level is not yet known.	Stay alert for more information. Know your evacuation route.
INFORMATION STATEMENT	An earthquake has occurred, but there is no threat of a destructive tsunami. Minor waves at most.	No action required at this time.
CANCELLATION	Cancels any previously-issued tsunami messages. Evidence of tsunami waves no longer observed at tide stations.	Resume normal activities.



Want to receive tsunami notifications?

Sign up to receive free emergency alerts at www.srd.ca/alerts and download the free Alertable app.