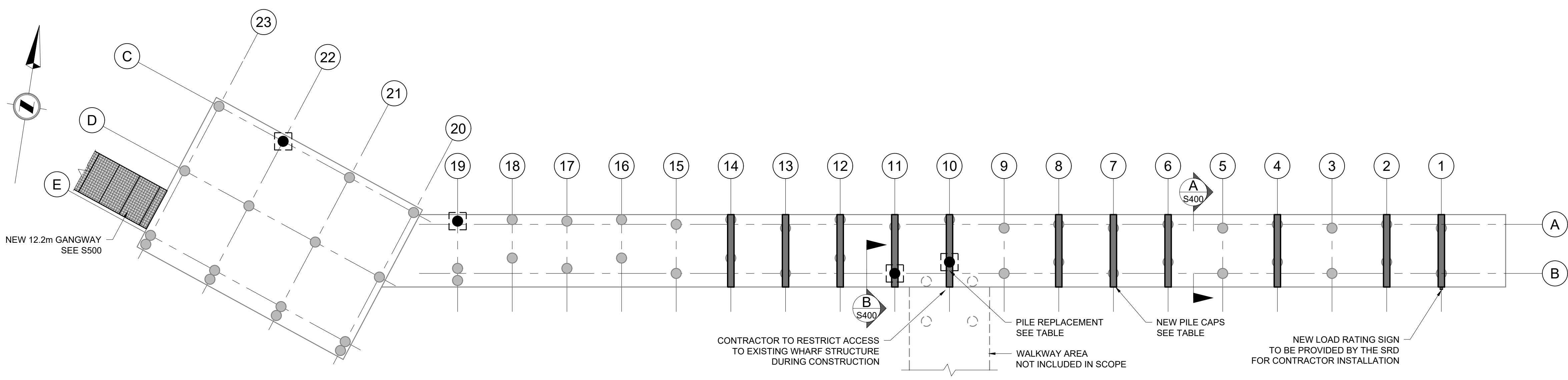


PLAN
SCALE 1:250



KEY PLAN
NTS



PLAN
SCALE 1:100

LEGEND

- EXISTING TIMBER PILE
- NEW TIMBER PILE
- NEW TIMBER PILE CAP

PILE REPAIRS	
PILE NO.	REPAIRS
10B	REPLACE PILE
11B	REPLACE PILE
19A	REPLACE PILE
22C	REPLACE PILE

PILE CAP REPAIRS	
BENT NO.	REPAIRS
1	REPLACE PILE CAP
2	REPLACE PILE CAP
4	REPLACE PILE CAP
6	REPLACE PILE CAP
7	REPLACE PILE CAP
8	REPLACE PILE CAP
10	REPLACE PILE CAP
11	REPLACE PILE CAP
12	REPLACE PILE CAP
13	REPLACE PILE CAP
14	REPLACE PILE CAP

- NOTES:
- FOR GENERAL NOTES SEE S001.
 - SEE SHEET S400 FOR ALL TIMBER REPAIR DETAILS FOR PILES, PILE CAPS, AND CROSS-BRACING.

THIS DRAWING AND DESIGN IS THE PROPERTY OF MCELHANNNEY AND SHALL NOT BE USED, REUSED OR REPRODUCED WITHOUT THE CONSENT OF MCELHANNNEY. MCELHANNNEY WILL NOT BE HELD RESPONSIBLE FOR THE IMPROPER OR UNAUTHORIZED USE OF THIS DRAWING AND DESIGN.	
THIS DRAWING AND DESIGN HAS BEEN PREPARED FOR THE CLIENT IDENTIFIED, TO MEET THE STANDARDS AND REQUIREMENTS OF THE APPLICABLE PUBLIC AGENCIES AT THE TIME OF PREPARATION. MCELHANNNEY, ITS EMPLOYEES, SUBCONSULTANTS AND AGENTS WILL NOT BE LIABLE FOR ANY LOSSES OR OTHER CONSEQUENCES RESULTING FROM THE USE OR RELIANCE UPON, OR ANY CHANGES MADE TO, THIS DRAWING, BY ANY THIRD PARTY, INCLUDING CONTRACTORS, SUPPLIERS, CONSULTANTS AND STAKEHOLDERS, OR THEIR EMPLOYEES OR AGENTS, WITHOUT MCELHANNNEY'S PRIOR WRITTEN CONSENT.	
THIS DRAWING IS NOT INTENDED FOR CONSTRUCTION PURPOSES UNTIL NOTED ISSUED FOR CONSTRUCTION. ALL MEASUREMENTS SHALL BE CHECKED BY CONTRACTOR ON SITE AND VERIFIED PRIOR TO THE INITIATION OF CONSTRUCTION.	
1	2025-06-13 ISSUED FOR CONSTRUCTION GH
0	2025-04-10 ISSUED FOR TENDER GH
Rev	Date Description App'd
COPYRIGHT MCELHANNNEY CONSULTING SERVICES LTD.	

CLIENT:

1211 RYAN ROAD
COURTENAY BC
CANADA V9N 3R6
T 250 338 5495

990 CEDAR ST. CAMPBELL RIVER, BC. V9W 7Z8

McElhanney

PERMIT TO PRACTICE
McElhanney Ltd.
Engineers and Geoscientists of
British Columbia
PERMIT NUMBER: 1003299

Drawn: JTH Drawing Check: MF Designed: ZT Design Check: MF Approver: GH

STRATHCONA REGIONAL DISTRICT

SURGE NARROWS
GENERAL ARRANGEMENT
AND PIER PLAN

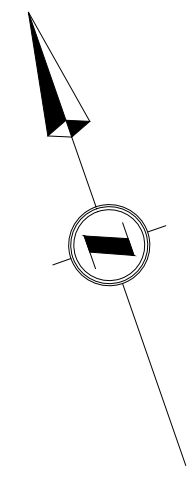
Approved Sealed

Drawing No. S300

Project No. 2211-71343-00 Rev. 1

ORIGINAL DWG SIZE: A3 (D 22 x 31) McElhanney - 2016-11-10

FILE: \\p1\m\l\221103_221103_PROD\CTS\1003_15991745_SDD\Wmf\Inspectors\100_Drawing\10_1_Sheet\1343-S301 - Surge Narrows New Float Design.dwg



NEW 13.7m x 2.4m COMPOSITE STYLE FLOAT. GRATING ON THIS FLOAT SHALL BE PAINTED YELLOW TO DENOTE SEAPLANE USE. BULLRAILS TO BE PAINTED YELLOW WITH SIGNAGE INSTALLED EVERY 3m ALONG THE BULLRAIL STATING "SEAPLANE MOORING ONLY"

STIFF LEG BRACE TO PROVIDE LATERAL SUPPORT FOR SEAPLANE DOCK AREA SHALL BE CAPABLE OF SUPPORTING THE DESIGN LIVE LOAD OF FLOATS, WITH BILLETS INCLUDED AS REQUIRED

SEAPLANE SAFETY SIGNAGE TO BE PROVIDED BY THE SRD. 3 POSTS SUITABLE FOR POSTING SIGNAGE AT 1.5m ABOVE GRATING, AND SUPPORTING A SAFETY CHAIN AT 1.1m ABOVE GRATING

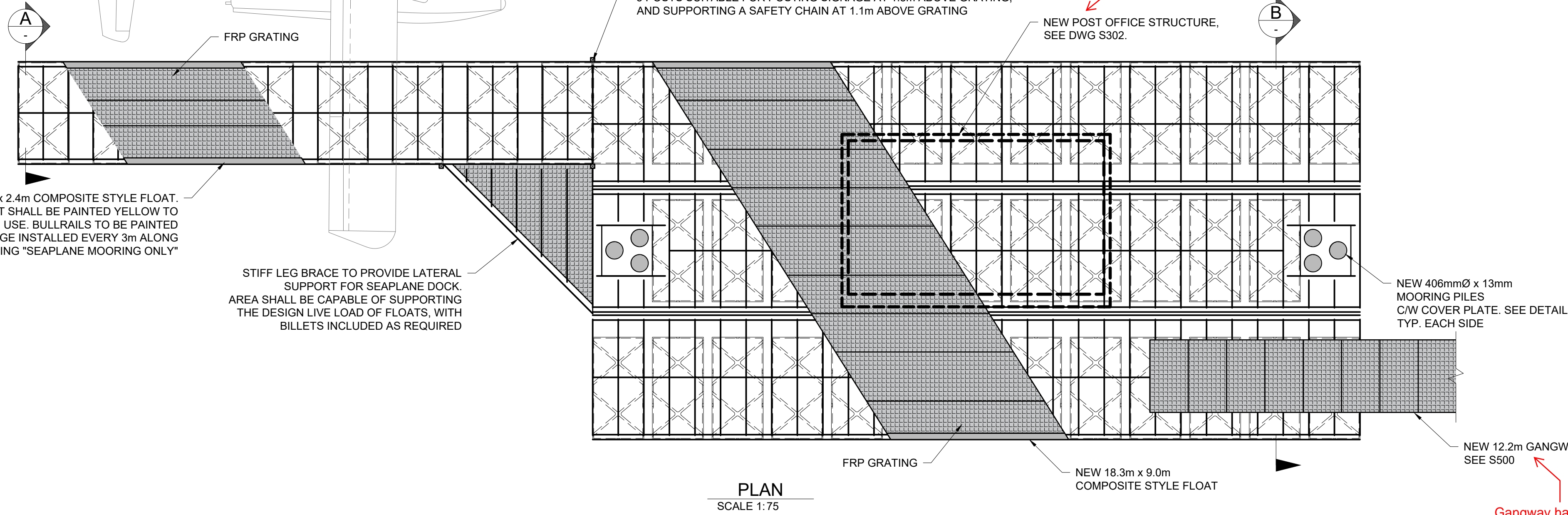
Post office will shift west to provide clearance from elongated gangway

NEW POST OFFICE STRUCTURE, SEE DWG S302.

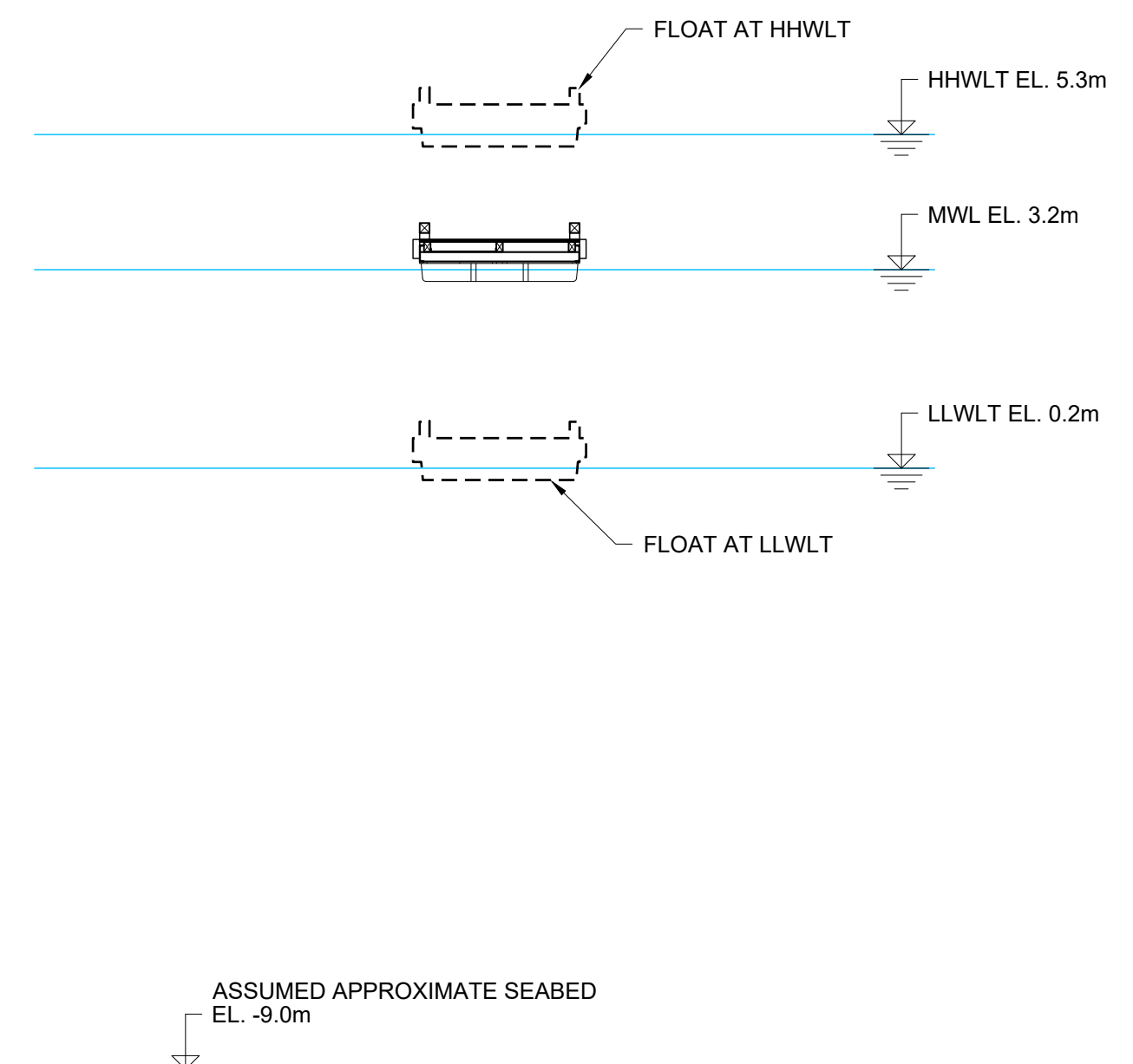
NEW 406mmØ x 13mm MOORING PILES CW COVER PLATE. SEE DETAIL TYP. EACH SIDE

NEW 12.2m GANGWAY SEE S500

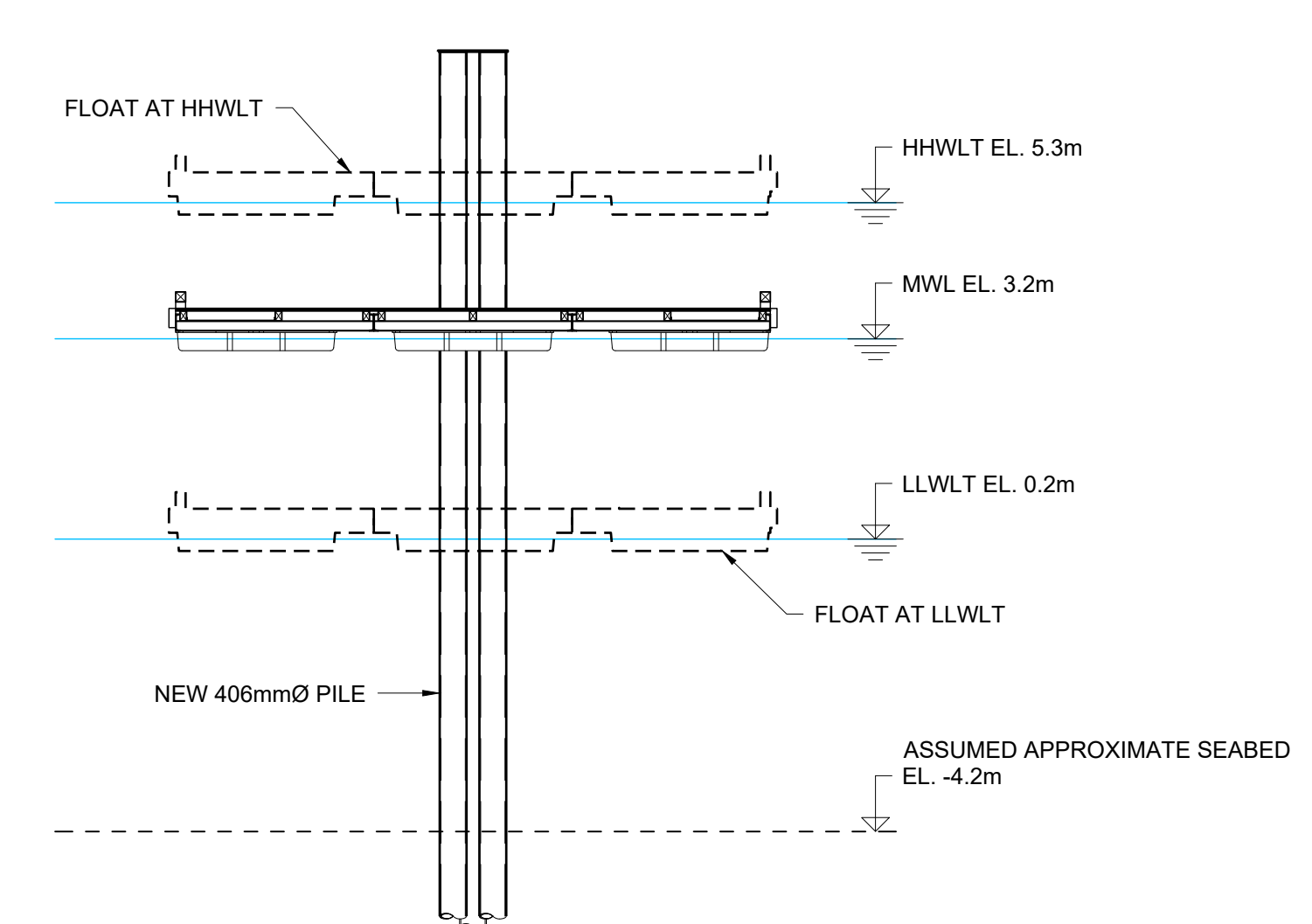
Gangway has been increased to 15.2m



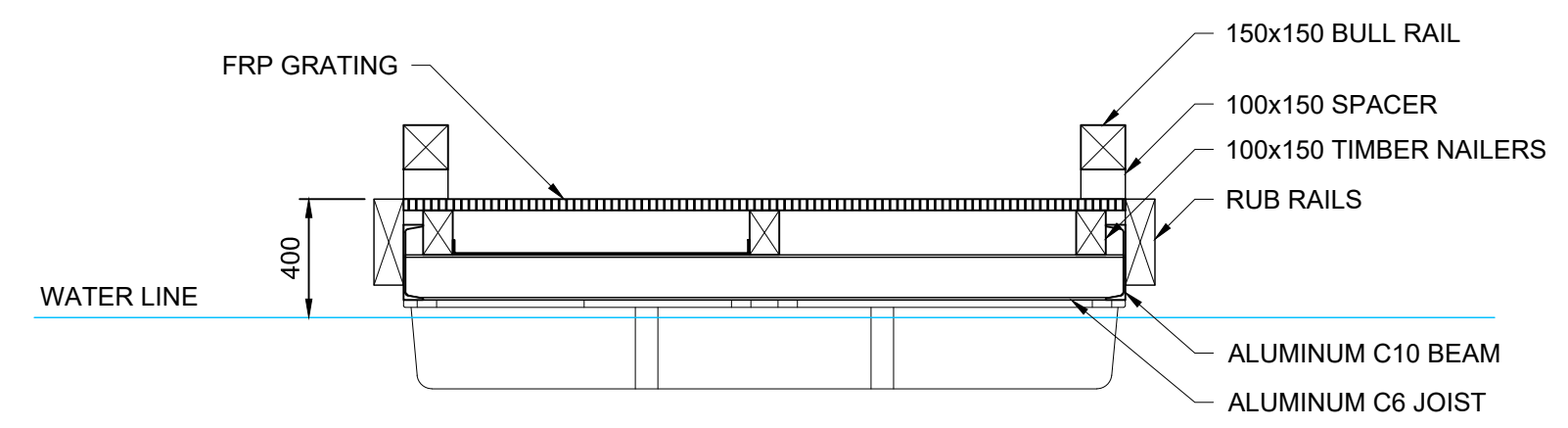
PLAN SCALE 1:75



SECTION A SCALE 1:100

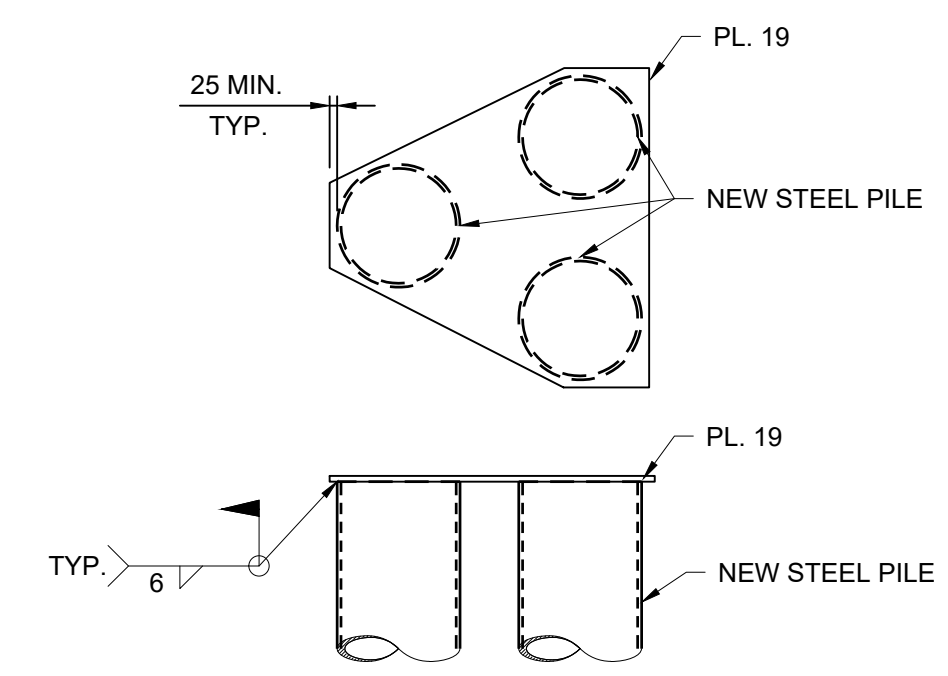


SECTION B SCALE 1:100



TYP. FLOAT SECTION SCALE 1:25

NOTE: COMPOSITE FLOAT ARRANGEMENT SHOWN IS INDICATIVE ONLY. CONTRACTOR IS RESPONSIBLE FOR THE FINAL DESIGN OF THE FLOATING DOCKS AND WILL PROVIDE SEALED SHOP DRAWINGS TO THE OWNER'S REPRESENTATIVE FOR REVIEW PRIOR TO MATERIAL PROCUREMENT AND FABRICATION



COVER PLATE DETAIL SCALE 1:25

NOTES:
1. FOR GENERAL NOTES SEE S001.

Rev	Date	Description	App'd
1	2025-06-13	ISSUED FOR CONSTRUCTION	GH
0	2025-04-10	ISSUED FOR TENDER	GH

THIS DRAWING AND DESIGN IS THE PROPERTY OF MCELHANNY AND SHALL NOT BE USED, REUSED OR REPRODUCED WITHOUT THE CONSENT OF MCELHANNY. MCELHANNY WILL NOT BE HELD RESPONSIBLE FOR THE IMPROPER OR UNAUTHORIZED USE OF THIS DRAWING AND DESIGN.

THIS DRAWING AND DESIGN HAS BEEN PREPARED FOR THE CLIENT IDENTIFIED, TO MEET THE STANDARDS AND REQUIREMENTS OF THE APPLICABLE PUBLIC AGENCIES AT THE TIME OF PREPARATION. MCELHANNY, ITS EMPLOYEES, SUBCONSULTANTS AND AGENTS WILL NOT BE LIABLE FOR ANY LOSSES OR OTHER CONSEQUENCES RESULTING FROM THE USE OR RELIANCE UPON, OR ANY CHANGES MADE TO, THIS DRAWING, BY ANY THIRD PARTY, INCLUDING CONTRACTORS, SUPPLIERS, CONSULTANTS AND STAKEHOLDERS, OR THEIR EMPLOYEES OR AGENTS, WITHOUT MCELHANNY'S PRIOR WRITTEN CONSENT.

THIS DRAWING IS NOT INTENDED FOR CONSTRUCTION PURPOSES UNTIL NOTED 'ISSUED FOR CONSTRUCTION'. ALL MEASUREMENTS SHALL BE CHECKED BY CONTRACTOR ON SITE AND VERIFIED PRIOR TO THE INITIATION OF CONSTRUCTION.

COPYRIGHT MCELHANNY CONSULTING SERVICES LTD.

CLIENT:

990 CEDAR ST, CAMPBELL RIVER, BC, V9W 7Z8

1211 Ryan Road
Courtenay BC
Canada V9N 3R6
T 250 338 5495

PERMIT TO PRACTICE
McElhanney Ltd.
Engineers and Geoscientists of
British Columbia
PERMIT NUMBER: 1003299

Drawn: JTH
Drawing Check: MF
Designed: ZT
Design Check: MF
Approver: GH

STRATHCONA REGIONAL DISTRICT

SURGE NARROWS
NEW FLOAT DESIGN

Approved Sealed

Drawing No. S301

Project No. 2211-71343-00 Rev. 1

DESTROY ALL PRINTS BEARING PREVIOUS REVISION

