

**Read Island and Surrounding Islands  
Community Wildfire Protection Plan  
Updated Fire Threat**



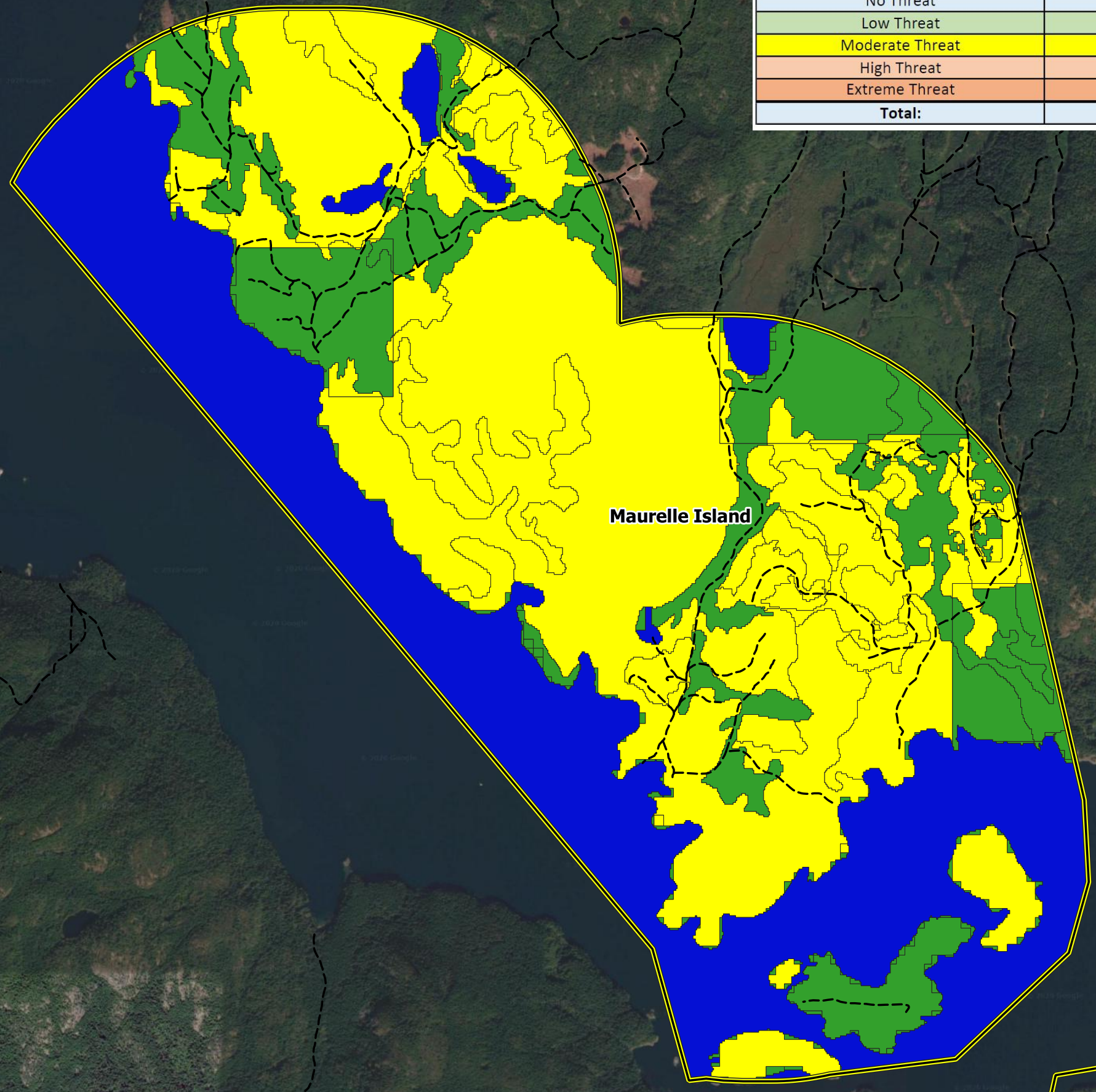
Scale: 1:25000  
Strathcona Regional District  
Electoral Area C  
Maurelle Island



**Legend**

- Digital Road Atlas
- Gravel
- Unknown, Deact
- Paved
- CWPP AOI
- Fire Threat Updated
- Class 0 - No Threat
- Class 1 - Low Threat
- Class 2 - Low Threat
- Class 3 - Low Threat
- Class 4 - Moderate Threat
- Class 5 - Moderate Threat
- Class 6 - Moderate Threat
- Class 7 - High Threat
- Class 8 - High Threat
- Class 9 - Extreme Threat
- Class 10 - Extreme Threat
- No Data
- Google Satellite

Maurelle Island Updated Fire Threat Summary	
Updated Fuel Type	Area (ha)
No Threat	535
Low Threat	333
Moderate Threat	848
High Threat	0
Extreme Threat	0
<b>Total:</b>	<b>1,716</b>



Maurelle Island

Read Island

Date: 04/24/2020  
Author: Colby Day, RFT  
Coordinate System: BC Albers NAD83

