

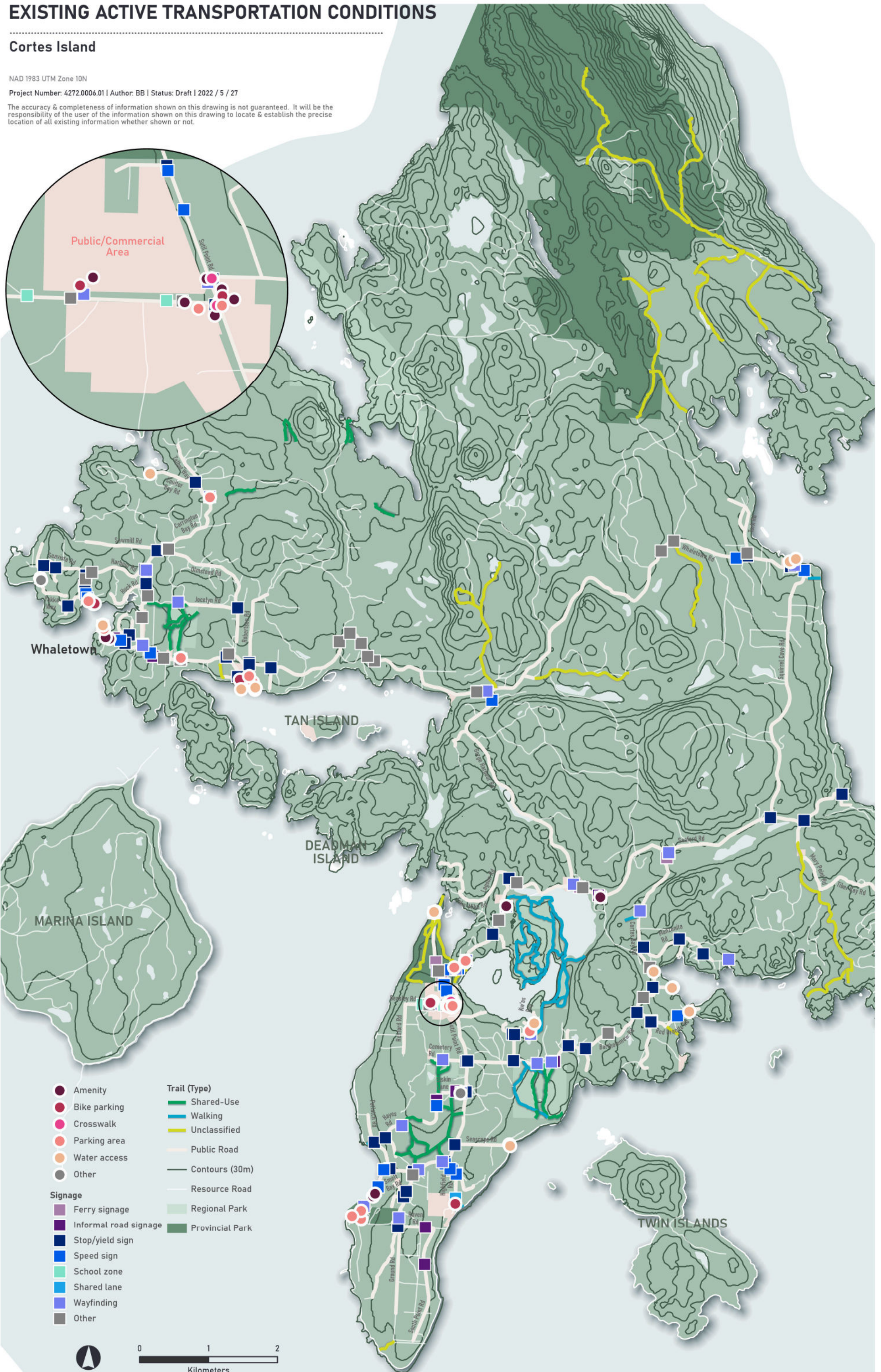
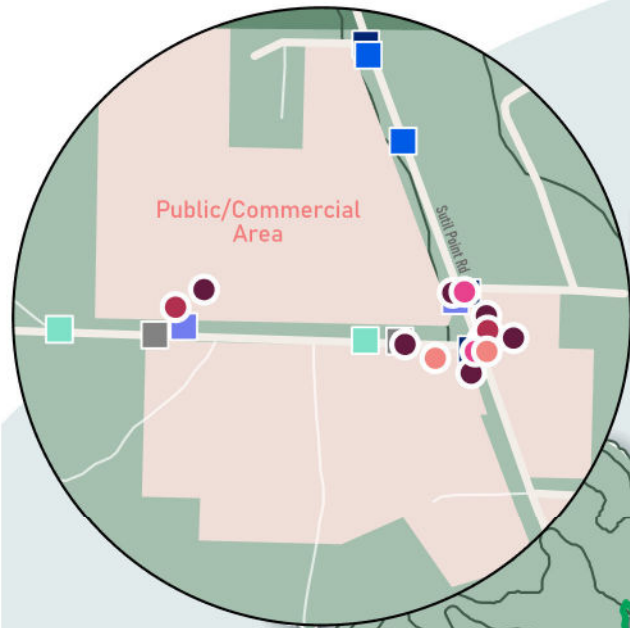
# EXISTING ACTIVE TRANSPORTATION CONDITIONS

## Cortes Island

NAD 1983 UTM Zone 10N

Project Number: 4272.0006.01 | Author: BB | Status: Draft | 2022 / 5 / 27

The accuracy & completeness of information shown on this drawing is not guaranteed. It will be the responsibility of the user of the information shown on this drawing to locate & establish the precise location of all existing information whether shown or not.



- |  |  |
|--|--|
| <ul style="list-style-type: none"> <li>● Amenity</li> <li>● Bike parking</li> <li>● Crosswalk</li> <li>● Parking area</li> <li>● Water access</li> <li>● Other</li> </ul>  | <p><b>Trail (Type)</b></p> <ul style="list-style-type: none"> <li>— Shared-Use</li> <li>— Walking</li> <li>— Unclassified</li> <li>— Public Road</li> <li>— Contours (30m)</li> <li>— Resource Road</li> <li>— Regional Park</li> <li>— Provincial Park</li> </ul> |
| <p><b>Signage</b></p> <ul style="list-style-type: none"> <li>■ Ferry signage</li> <li>■ Informal road signage</li> <li>■ Stop/yield sign</li> <li>■ Speed sign</li> <li>■ School zone</li> <li>■ Shared lane</li> <li>■ Wayfinding</li> <li>■ Other</li> </ul> |  |

