

This document contains the Executive Summary, Summary of Recommendations, and key CWPP maps (Area of Interest, Local Wildfire Risk Analysis, and Land Ownership Maps).

The purpose of this document is to provide a brief summary of the analysis, results, and recommendations associated with the 2020 Community Wildfire Protection Plan. Refer to the complete CWPP document and associated maps for more detailed information and references.

The Summary of Recommendations in this document are organized by the Level of Priority. In the complete CWPP document, the Summary of Recommendations are organized in the order in which they appear in the document. The numbering is consistent across all documents.

Strathcona Regional District

Electoral Area A

2020 Community Wildfire Protection Plan



Submitted to:

Shaun Koopman – Emergency Program Coordinator at Strathcona Regional District

Submitted by:

SuavAir Aerial Imaging
info@suavair.com
250-830-8849

June 26, 2020



ACKNOWLEDGMENTS

This plan was prepared by Colin Filliter, RPF and Cynthia Lu, RPF. Colby Day, RFT completed the spatial data analysis and mapping. The authors of this report would like to thank and acknowledge the following people for their assistance and participation in creating the Electoral A Community Wildfire Protection Plan:

Shaun Koopman – Emergency Program Coordinator, Strathcona Regional District

Paul Hibbert – Deputy Fire Chief, Sayward Volunteer Fire Department

Scott Boyd – GIS Analyst, Western Forest Products

Ben Boghean, BC Wildfire Service

Raphael Jamin – BC Wildfire Service

This report is made possible by the Union of BC Municipalities through the Community Resiliency Investment grant.

REGISTERED PROFESSIONAL SIGN & SEAL

Colin Filliter, RPF #4820 SuavAir Aerial Imaging	Cynthia Lu, RPF #4923 SuavAir Aerial Imaging
Date Signed: June 25, 2020	Date Signed: June 25, 2020

EXECUTIVE SUMMARY

The Community Wildfire Protection Plan (CWPP) was completed under the framework established by the Community Resilience Investment program, administered by the Union of BC Municipalities. The area of interest is the wildland urban interface (WUI) surrounding the Strathcona Regional District (SRD) Electoral Area A communities of Sayward Valley, Walter's Island, Brown's Bay, Eagle's Cove, and Esperanza. The AOI's are within the traditional territories of the Wei Wai Kum First Nation, We Wai Kai First Nation, K'omoks First Nation, Homalco First Nation (Xwemalhkwu), Ehattesaht Chinehkint First Nation, and Ka:'yu:'k't'h'/Che:k:tlles7et'h First Nations. This CWPP identifies the wildfire risks surrounding the communities, potential consequences of a wildfire to the communities, and recommends possible ways to reduce the risk.

A local wildfire risk assessment was completed for the Sayward Valley using the best available spatial data. The fuel types in the area are a mosaic of mature conifer forests, recently harvested cut blocks, immature forests, and deciduous patches. Previous fire history in the area indicates low fire density from both human and lightning caused fires. The local wildfire threat is Low to Moderate. The local wildfire risk ranges from Low to High with higher risk areas associated with fuels in close proximity (within 500m) of the community. A local risk assessment was completed for Walter's Island as part of the 2020 Ka:'yu:'k't'h'/Che:k:tlles7et'h First Nations CWPP. The information is presented again here, the risk on Walter's Island is Low. Risk assessments were not completed for the Esperanza, Brown's Bay and Eagle's Cove AOI's. In general, the Provincial Strategic Threat Analysis finds the wildfire threat for these areas to be Low to Moderate. FireSmart planning and activities are recommended for all areas of interest.

Recommendations are summarized in the table below. The recommendations are based on a review of best practices from other jurisdictions, gaps identified through community engagement, the local wildfire risk analysis, prevention strategies for human-caused ignitions, and integration of FireSmart program principles. FireSmart is a national initiative to educate and empower the public on what can be done to protect their families, properties, and communities from wildfire. Several FireSmart activities and practices are recommended for all areas of interest. Fuel management treatments (surface and ladder fuel removal) are recommended for High risk areas within the Sayward Valley. Along with fuel management, community awareness and education play a critical role in reducing the wildfire risk. Community awareness focuses on FireSmart principles, understanding fire use restrictions, emergency preparedness, and regularly sharing fire safety related information with the community. Emergency evacuation planning is also identified as priority for each of the AOI's.

The Sayward Volunteer Fire Department provides fire protective services for the Sayward Valley. Continued recruitment and training for volunteer firefighters is critically important to maintaining response capacity for WUI fires and any other emergencies. No other AOI's have fire department protective services. On Crown lands, the BC Wildfire Service manages wildfire response.

This plan makes 29 recommendations to the Strathcona Regional District. The recommendations should be further prioritized by the SRD depending on local strengths, opportunities, and the availability of human, financial, and physical resources. At minimum, the plan should be revisited every five years to assess the progress and relevance of previous recommendations and for the continual improvement of wildfire protection planning as more information becomes available.

HIGH PRIORITY RECOMMENDATIONS

No.	Priority	Objective	Recommendation / Next Steps	Responsibility
1.	High	To develop emergency preparedness and evacuation plans specific to each of the AOI's, accounting for local and regional access challenges.	Assess and map emergency evacuation routes and muster routes for each AOI. Make Emergency Evacuation Maps available on the SRD website.	SRD
Rationale: Based on gaps identified during CWPP engagement. No specific evacuation routes or muster point mapping available.				
2.	High	To reduce the likelihood of human-caused ignitions by regulating open burning in Electoral Area A with a local bylaw.	SRD should enact an Open Burning Bylaw to regulate the timing of fires, size of fires, required availability of suppression materials, and materials permitted to be burned. At minimum, the bylaw should apply to the Electoral Area within the Sayward Fire Department Fire Protective Services Area.	SRD
Rationale: Based on best practice observed in similar jurisdictions to reduce the likelihood of human-caused WUI fire events.				
4.	High	To engage private landowners in the FireSmart program and planning to help reduce the likelihood of disaster in the event of a WUI fire.	Host Community Champion Workshops for remote/isolated areas. Consider remote or virtual workshop delivery. For Sayward Valley consider working with the Sayward Community Recreation Association.	SRD
Rationale: The FireSmart program is a nationwide initiative. Several post-wildfire examples across the country show how FireSmart activities reduce the structure losses associated with WUI fires. FireSmart activities are a focus area for all CWPP's developed under the UBCM CRI funding program. FireSmart is implemented through best practices in 7 disciplines: education, emergency planning, vegetation management, legislation, development, interagency cooperation and cross-training.				
5.	High	To engage private landowners in the FireSmart program and planning to help reduce the likelihood of disaster in the event of a WUI fire.	Contact a Local FireSmart Representative to conduct FireSmart Community Hazard Assessments as noted in Table 9.	SRD

Rationale: As above in #4. Priority areas encompass remote AOI's and critical infrastructure in the Sayward Valley AOI.				
6.	High	To improve community FireSmart awareness and to reduce hazards in the structural ignition zone of critical community infrastructure.	Conduct a FireSmart Hazard Assessment around community/municipal infrastructure such as Firehall No. 2, and Sayward Heritage Hall.	SRD, coordinate with Sayward Volunteer Fire Department
Rationale: As above in #4. Priority areas encompass remote AOI's and critical infrastructure in the Sayward Valley AOI.				
8.	High	To reduce the ignition risk within the FireSmart structural ignition zone by making property owners aware of preferred FireSmart building materials.	Connect property owners to FireSmart guides for selecting building materials and incorporating FireSmart principles into construction and location. The FireSmart Home Development Guide is a key resource. In the absence of an Electoral Area A building bylaw, the SRD should recommend best practices for building within Area A to minimize WUI risk. Make the resources available online where other SRD building code/bylaw information is located.	SRD
Rationale: FireSmart best practice, as referred to in #4.				
9.	High	To improve community awareness of the FireSmart program principles and activities through education.	Encourage residents and property owners to complete the free, online, FireSmart 101 course.	SRD
Rationale: Recommended practice for public education discipline of FireSmart, as referred to in #4.				
10.	High	To communicate the content of the CWPP and improve community awareness of wildfire planning.	Make the CWPP video, report, and associated maps available to the public through the SRD website. Share CWPP with forest tenure holders and industrial operators within the AOI.	SRD
Rationale: Recommended practice for public education discipline of FireSmart, as referred to in #4.				

11.	High	To improve community understanding of wildfire threat and risk; to improve awareness of what actions can be taken to mitigate risk.	Use SRD social media accounts to regularly share wildfire preparedness, wildfire safety, and FireSmart practices information. Posts can redirect followers to the established resources of FireSmart BC, BC Wildfire Service, and Prepared BC.	SRD
Rationale: Recommended practice for public education discipline of FireSmart, as referred to in #4.				
13.	High	To improve public awareness of wildfire threat and risk; and awareness of what actions can be taken to mitigate risk.	Organize an annual Community Fire Safety or Community Wildfire Preparedness day (for Sayward Valley) Activities may include: checking fire extinguishers and smoke alarms in homes; conducting FireSmart clearing of Priority 1 (up to 10m) zones around critical community infrastructure, FireSmart presentations, fire department demonstrations, etc.	SRD, coordinate with Village of Sayward
Rationale: Recommended practice for public education discipline of FireSmart, as referred to in #4.				
19.	High	To improve water availability for fire suppression in isolated areas in the Sayward Valley.	Assess, maintain, and/or upgrade the water storage reservoirs located at Firehall #2 and Sayward Junction. Routine maintenance checks should be performed to ensure reliable water supply for fire suppression.	SRD, coordinate with SVFD
Rationale: Gap identified during CWPP engagement. Water availability for fire suppression is a concern, the status of these reservoirs was not able to be confirmed.				
22.	High	To maintain and upgrade the condition of the main access and emergency evacuation route along Sayward Road.	Develop annual action plans for regular maintenance of the Sayward Road right-of-way including brushing, danger tree and surface fuel management. Ensure plans are in place for timely removal of storm damaged trees and debris prior to each fire season. Long-term planning to replace the single-lane bridge is recommended.	SRD, coordinate with Village of Sayward

Rationale: Build up of fuel hazards from previous storm damage were concerns identified by both SVFD and BCWS.				
26.	High	To maintain and improve inter-agency communication during emergencies.	The SRD should arrange an annual meeting, prior to fire season, to include BCWS – North Island Fire Zone, EMBC, and local fire department representatives to review incident command structure and emergency support services in the event of a WUI fire.	SRD
Rationale: Key contacts and individuals may change from year to year. Annual meetings recommended as a best practice to build relationships and improve communication in the event of a WUI event. Interagency cooperation and cross-training are FireSmart disciplines.				
27.	High	To improve equipment availability for structure protection in the event of a WUI fire.	Ensure mutual aid or service agreements are in place with the City of Campbell River / Campbell River Fire Department for deployment of the City's structural protection unit in the event of the WUI's threatening structures in the Electoral Area.	SRD
Rationale: Recommended as a best practice emergency planning activity, to identify priorities or conditions for deployment of equipment prior to the event of a WUI fire.				
28.	High	To improve community preparedness for structure protection due to the remote and isolated location of properties and in some cases, absence of a local fire department.	Develop a checklist for property owners of fire suppression equipment and emergency supplies to keep readily available during fire season. Items should include smoke alarms, fire extinguishers, hand tools, personal protective equipment, communications devices, and a first aid kit.	SRD
Rationale: Recommended best practice for emergency preparedness considerations that uniquely address isolated/remote local conditions of the WUI.				

MEDIUM PRIORITY RECOMMENDATIONS

No.	Priority	Objective	Recommendation / Next Steps	Responsibility
3.	Med	To reduce the fuel hazard within the high risk areas identified within 500m of structures (WUI500).	Engage a qualified forest professional in creating site level prescriptions, and supervising/ coordinating operational implementation of treatments for each recommended treatment area. Consultation with applicable First Nations, private landowners, industry tenure holders, municipalities and the SRD will be required as part of the operational planning process.	SRD
Rationale: Recommended treatment areas based on local wildfire risk analysis. High risk areas within 500m of community structures or critical infrastructure are priority for treatment.				
12.	Med	To improve community awareness of local bylaws, wildfire regulations, and fire safety information.	Develop a Sayward Valley specific Wildfire Safety and Preparedness informational pamphlet for distribution to residents within the Fire Protective Services Area. Information should include best practices for open burning, where/how to access fire weather information, venting index information, open fire/campfire bans (BCWS), relevant Bylaws and legal information.	SRD
Rationale: Recommended practice for public education discipline of FireSmart, as referred to in #4.				
14.	Med	To reduce the risk of human-caused ignitions by promoting alternative means of yard/property waste disposal beyond open fires.	Provide residents with information on alternatives to burning yard waste. Link this information on the SRD website. Alternatives to burning include yard waste disposal centres (Sayward Transfer Station), composting, or xeriscaping.	SRD
Rationale: Recommended practice, observed in similar jurisdictions to reduce the likelihood of human-caused WUI fire events.				

15.	Med	To reduce the fuel hazard along powerline right-of-ways.	Work with BC Hydro to mitigate risks along right-of-ways. Communicate the importance of fuel hazard abatement along powerline corridors when brushing, clearing fallen trees, or other vegetation management work occurs.	SRD, coordinate with Village of Sayward
Rationale: Recommended best practice to address inter-agency cooperation within the WUI. Refer to FireSmart program implementation in #4.				
16.	Med	To improve public awareness of Fire Danger and burning restrictions when in effect.	Install additional signage at the Sayward Visitors Centre at Sayward Junction to communicate fire bans, burning restrictions and the Fire Danger Rating.	SRD, coordinate with Village of Sayward, SVFD, and BCWS
Rationale: Recommended best practice for community education and awareness regarding wildfire protection planning and FireSmart program implementation. Sayward Junction is a high traffic, highly visible location for signage.				
18.	Med	To improve water availability for fire suppression in isolated areas in the Sayward Valley.	Work with the Village of Sayward, Sayward Volunteer Fire Department to procure a water tanker truck. Construction of a storage area to house the truck should also be planned for during the acquisition.	SRD, coordinate with Village of Sayward and SVFD
Rationale: Water availability in the fire protective services area, outside of the hydrant coverage area was identified as an issue during CWPP engagement.				
23.	Med	To continue recruitment and retention efforts for volunteer fire department members.	Regularly schedule open houses or recruitment days for the Sayward Volunteer Fire Department. Connect with the community regularly through social media and consider its use as an advertising tool.	SRD, coordinate with SVFD
Rationale: Based on CWPP engagement, recruitment of members is a challenge in small communities. Recommended practice from other jurisdictions is to use social media as a tool to connect with the community.				
24.	Med	To ensure all volunteer fire department members are trained to wildland firefighting standards.	Ensure all members of Sayward Volunteer Fire Department complete Wildland Forest Firefighter Level 1 (SPP-WFF 1) training. SPP-115 (structure protection workshop) and ICS100 are also recommended.	SRD, coordinate with Village of Sayward and SVFD
Rationale: As new members join SVFD, to keep SPP-WFF-1 training top of mind.				

25.	Med	To maintain SVFD's readiness for responding to WUI fires.	<p>Include wildfire-specific training sessions that include: fire line construction, pump operations, sprinkler protection, portable water tank deployment, and wildland hose operations. Interface training should include completion of a wildfire simulation exercise and safety training specific to wildland fire and risks inherent with natural areas.</p> <p>Work with the BCWS North Island Fire Zone, and SRD to conduct annual joint training or mock exercises.</p>	SRD, coordinate with Village of Sayward and SVFD
<p>Rationale: Based on CWPP engagement with the SVFD and BCWS, no such coordination is known to be in place. Interagency cooperation and cross-training are FireSmart disciplines. The BCWS North Island Fire Zone has indicated cross-training is an area of interest for future development.</p>				
29.	Med	To improve capacity and equipment availability for structure protection.	Encourage property owners to purchase sprinkler kits and water supply systems for sprinkler kits to deploy on their homes/critical structures.	SRD
<p>Rationale: Based on CWPP engagement, the equipment availability for structural protection in the region could be improved. Sprinkler kits are a relatively low-cost option and highly effective option for the Village and residents.</p>				

LOW PRIORITY RECOMMENDATIONS

No.	Priority	Objective	Recommendation / Next Steps	Responsibility
7.	Low	To improve community FireSmart awareness and to reduce hazards in the structural ignition zone of homes.	Recommend/encourage fire resistant landscaping materials to residents and to design public spaces with fire resistant landscaping materials where possible. Refer to FireSmart Canada's yard and landscaping guidelines.	SRD
Rationale: FireSmart best practice, as referred to in #4.				
17.	Low	To improve water availability for fire suppression in isolated areas in the Sayward Valley.	For areas in the Sayward Valley, assess the feasibility and potential locations for dry hydrant installation, and/or other water storage options for fire fighting during drought conditions	SRD, coordinate with SVFD
Rationale: Water availability in the fire protective services area, outside of the hydrant coverage area was identified as an issue during CWPP engagement.				
20.	Low	To improve emergency evacuation communications to the community.	Encourage residents/ landowners to sign up to the SRD's free Connect Rocket emergency notification service which sends out text messages to cellular subscribers and voice calls to landlines.	SRD
Rationale: Existing program/infrastructure to continue to encourage residents to use.				
21.	Low	To identify, clear and maintain helicopter landing areas for emergency evacuations and/or wildfire response operations.	Identify potential helicopter landing sites throughout the AOI's. Designate areas within a Local Emergency Plan. Helicopter landing sites should be continually maintained to be free of obstructions, loose debris and overhanging vegetation or obstacles; and visibly marked where possible. Landing areas should be easily accessible and easily controlled spaces. BCWS helicopter landing area specifications are available in their Pilot Guide .	SRD
Rationale: Recommended best practice for emergency access and evacuation planning. Safe and clear landing areas concern brought forward by BCWS.				

SUMMARY OF POTENTIAL RESOURCES AND FUNDING SUPPORTS

Resources	Land Jurisdiction	Types of Projects
Local government taxation	Municipal Private	<ul style="list-style-type: none"> • Various projects as directed by local governments including FireSmart assessments and activities, debris disposal, equipment purchases, training, etc.
Forest Enhancement Society BC (FESBC)	Provincial Crown	<ul style="list-style-type: none"> • Fuel management treatment prescriptions and implementation
UBCM Community Resiliency Investment Program (CRI)	Municipal First Nations Private	<ul style="list-style-type: none"> • FireSmart hazard assessments, demonstration projects, off-site debris disposal (i.e.: chip trucks) • Community Education • Development planning • Emergency planning and cross training
UBCM Community Emergency Preparedness Fund (CEPF)	n/a	<ul style="list-style-type: none"> • Emergency support services training • Fire department training or equipment • Emergency evacuation planning • Emergency operations training
First Nations Emergency Support Services – Indigenous Services Canada (FNESS/ISC)	First Nations Reserve lands	<ul style="list-style-type: none"> • Fuel management prescriptions and treatments On-Reserve
BC Wildfire Service	Provincial Crown	<ul style="list-style-type: none"> • Fuel management treatments (in coordination with local fire zone officer) <ul style="list-style-type: none"> • Public education and outreach

(2571000 m



Electoral Area A - Sayward Valley Community Wildfire Protection Plan Area of Interest Map

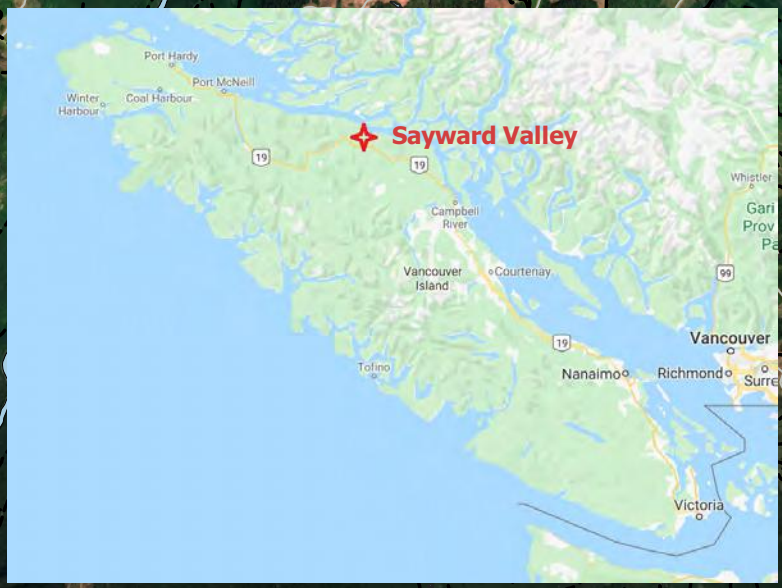


Scale: 1:70000
Strathcona Regional District
Electoral Area A
Sayward Valley



Legend

- Digital Road Atlas
 - Gravel
 - Unknown, Deact
 - Paved
 - Highway
 - Crown Tenure - Utilities
 - CWPP AOI
 - Crown Woodlots
 - Tree Farm Licence
 - Indian Reserves
 - Municipality
 - Electoral Area
 - Regional District
 - SRD Fire Services
 - Community Watersheds
 - Major Rivers
 - Lakes
 - Wetlands
- Google Satellite



**Brown's Bay Community Wildfire Protection Plan
Area of Interest**

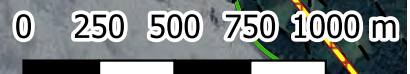
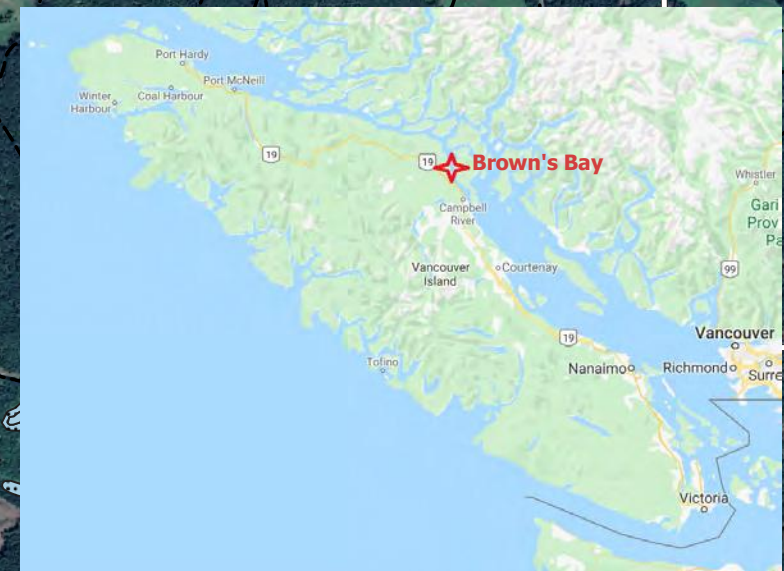
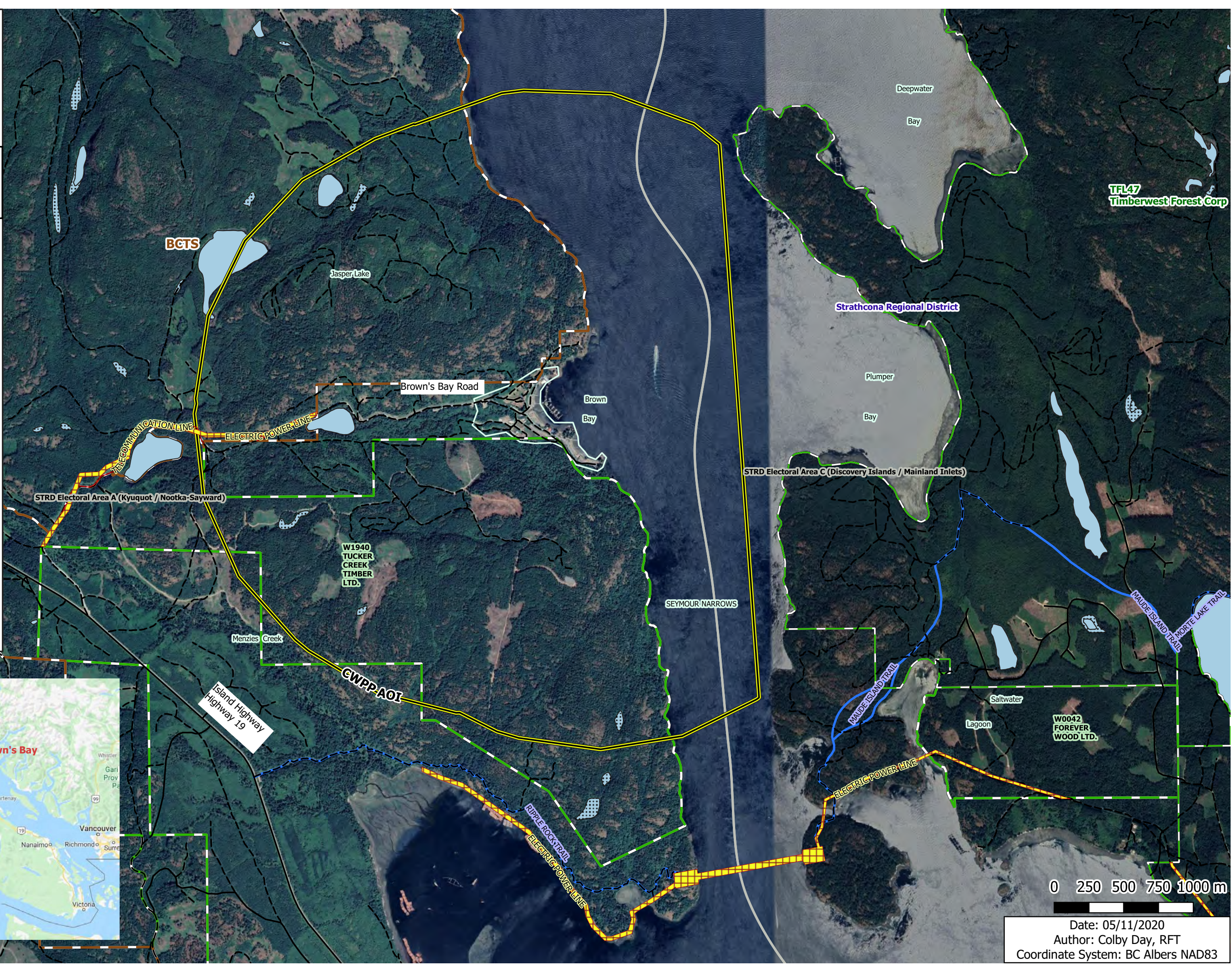


Scale: 1:25000
Strathcona Regional District
Electoral Area A
Brown's Bay



Legend

- Gravel, Unknown, Deact
 - Paved
 - CWPP AOI
 - Crown Tenure - Utilities
 - Urban Interface
 - Tree Farm Licence
 - BCTS Operating Areas
 - Crown Woodlots
 - Electoral Area
 - Regional District
 - Parks and Protected Areas
 - Recreation Lines
 - Recreation Polygon
 - Wetlands
 - Lakes
 - Major Rivers
- Google Satellite



Date: 05/11/2020
Author: Colby Day, RFT
Coordinate System: BC Albers NAD83

**Eagle's Cove Community Wildfire Protection Plan
Area of Interest**



Scale: 1:20000
Strathcona Regional District
Electoral Area C
Eagle's Cove



Legend

- Gravel, Unknown, Deact
- Paved
- ▨ Crown Tenure - Utilities
- ▭ CWPP AOI
- ▭ Tree Farm Licence
- ▭ Crown Woodlots
- ▭ Electoral Area
- ▭ Regional District
- ▨ Parks and Protected Areas
- Recreation Lines
- ▨ Recreation Polygon
- ▭ Urban Interface
- ▨ Wetlands
- ▭ Lakes
- ▭ Major Rivers

Google Satellite



Date: 05/25/2020
Author: Colby Day, RFT
Coordinate System: BC Albers NAD83

**Esperanza Community Wildfire
Protection Plan
Area of Interest**

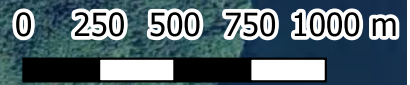
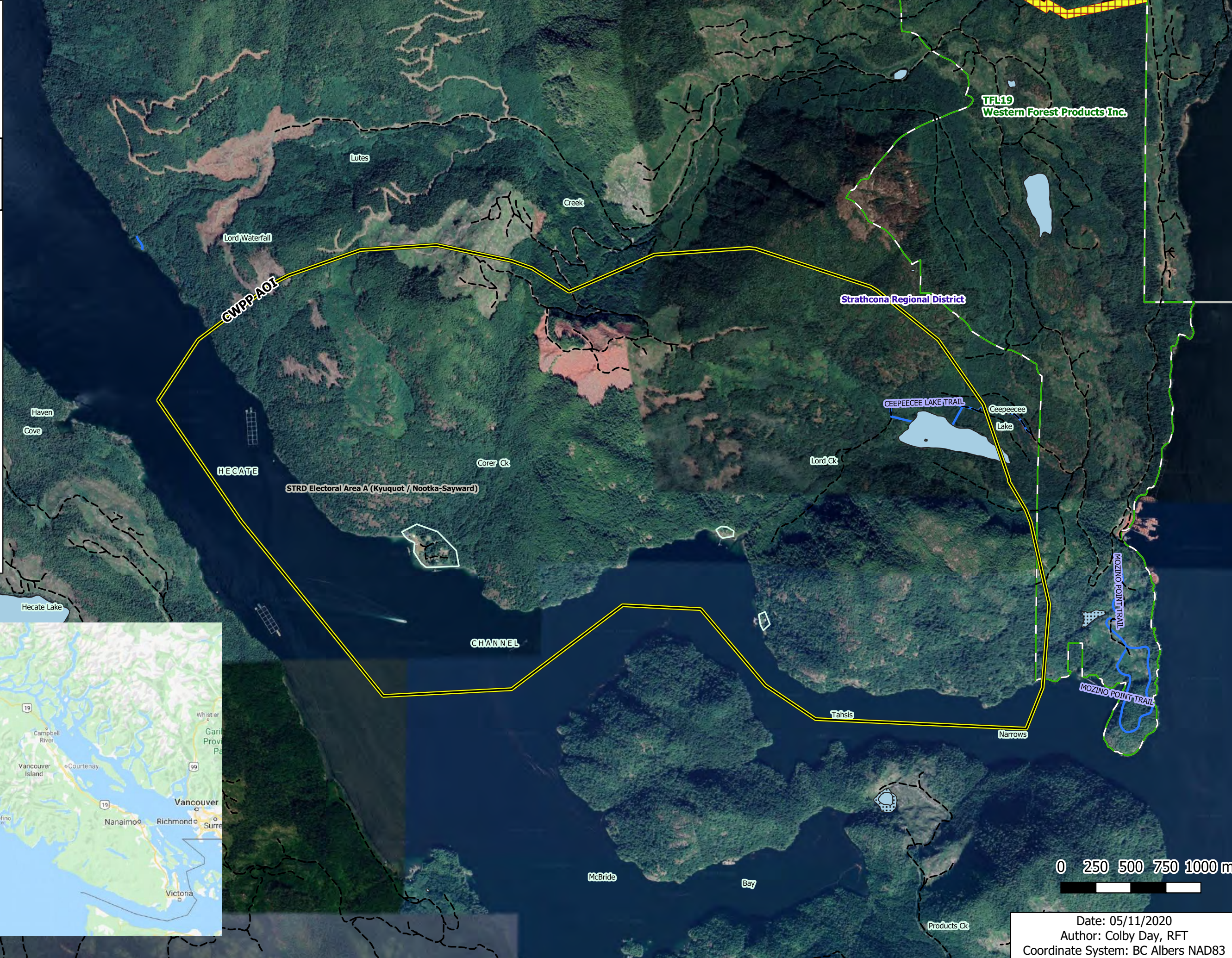


Scale: 1:25000
Strathcona Regional District
Electoral Area A
Esperanza



Legend

- Digital Road Atlas
- Gravel, Unknown, Deact
- Paved
- Crown Tenure - Utilities
- CWPP AOI
- Tree Farm Licence
- Electoral Area
- Regional District
- Parks and Protected Areas
- Recreation Lines
- Wetlands
- Lakes
- Major Rivers
- Google Satellite



Date: 05/11/2020
Author: Colby Day, RFT
Coordinate System: BC Albers NAD83

Walter's Island Community Wildfire Protection Plan Area of Interest



Scale: 1:20000
 Strathcona Regional District
 Electoral Area A
 Walter's Island

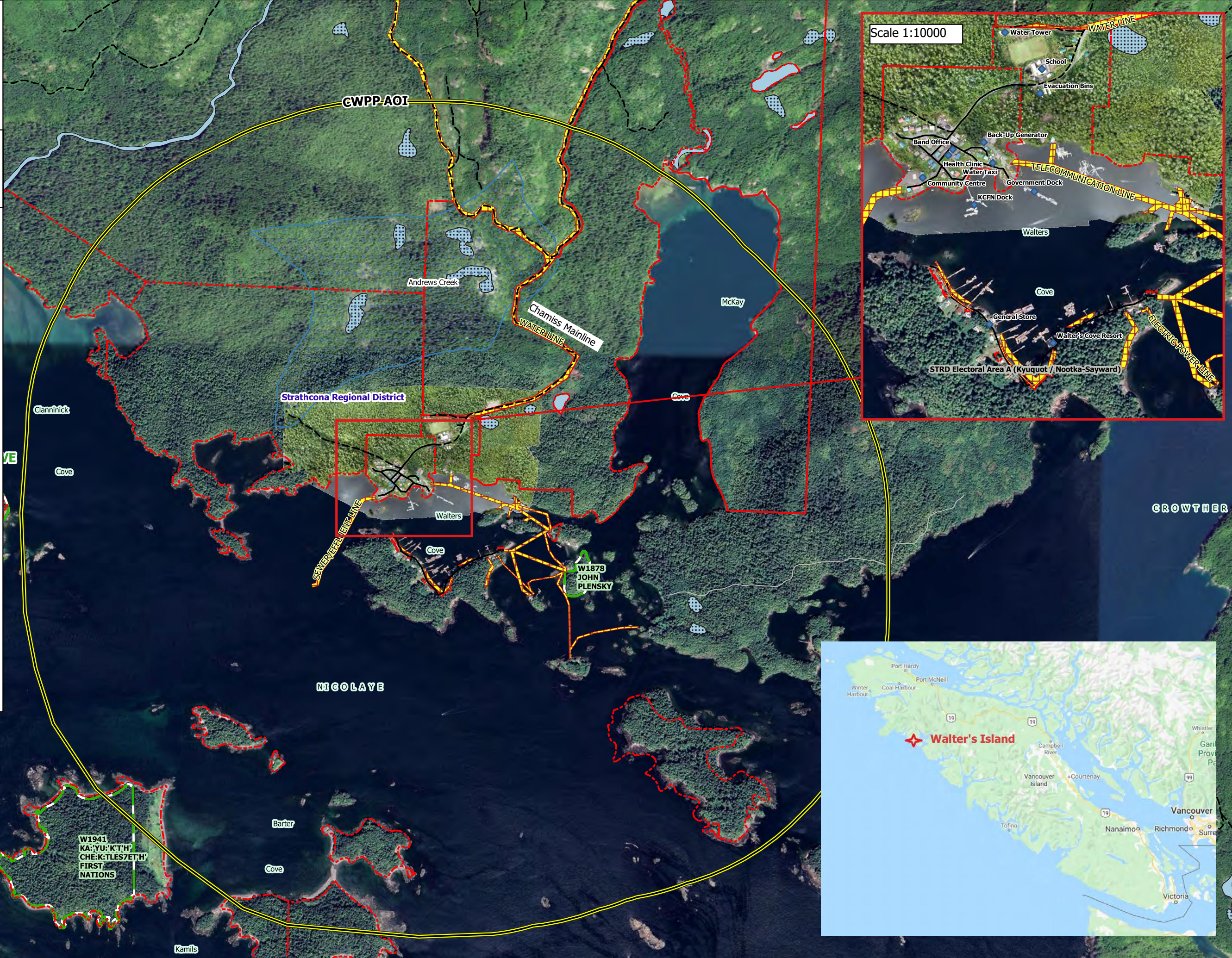


Legend

- ◆ Critical Infrastructure
 - Digital Road Atlas
 - Gravel
 - Unknown, Deact
 - Paved
 - ▨ Crown Tenure - Utilities
 - ▭ CWPP AOI
 - Kyuquot Land Ownership
 - ▭ First Nation Treaty Land
 - ▭ Crown Woodlots
 - ▭ Community Watersheds
 - ▭ Electoral Area
 - ▭ Regional District
 - ▭ Parks and Protected Areas
 - ▭ Lakes
 - ▭ Major Rivers
 - ▭ Wetlands
- Kyuquot Drone_2019-09-16_SuavAir
 Google Satellite



Date: 05/11/2020
 Author: Colby Day, RFT
 Coordinate System: BC Albers NAD83



W1941
 KA:YU:'K'T'H'
 CHE:K:TLES7ET'H'
 FIRST NATIONS

W1878
 JOHN
 PLENSKY

2571000 m



Electoral Area A - Sayward Valley Community Wildfire Protection Plan Updated Fire Risk Map



Scale: 1:70000
Strathcona Regional District
Electoral Area A
Sayward Valley



Legend

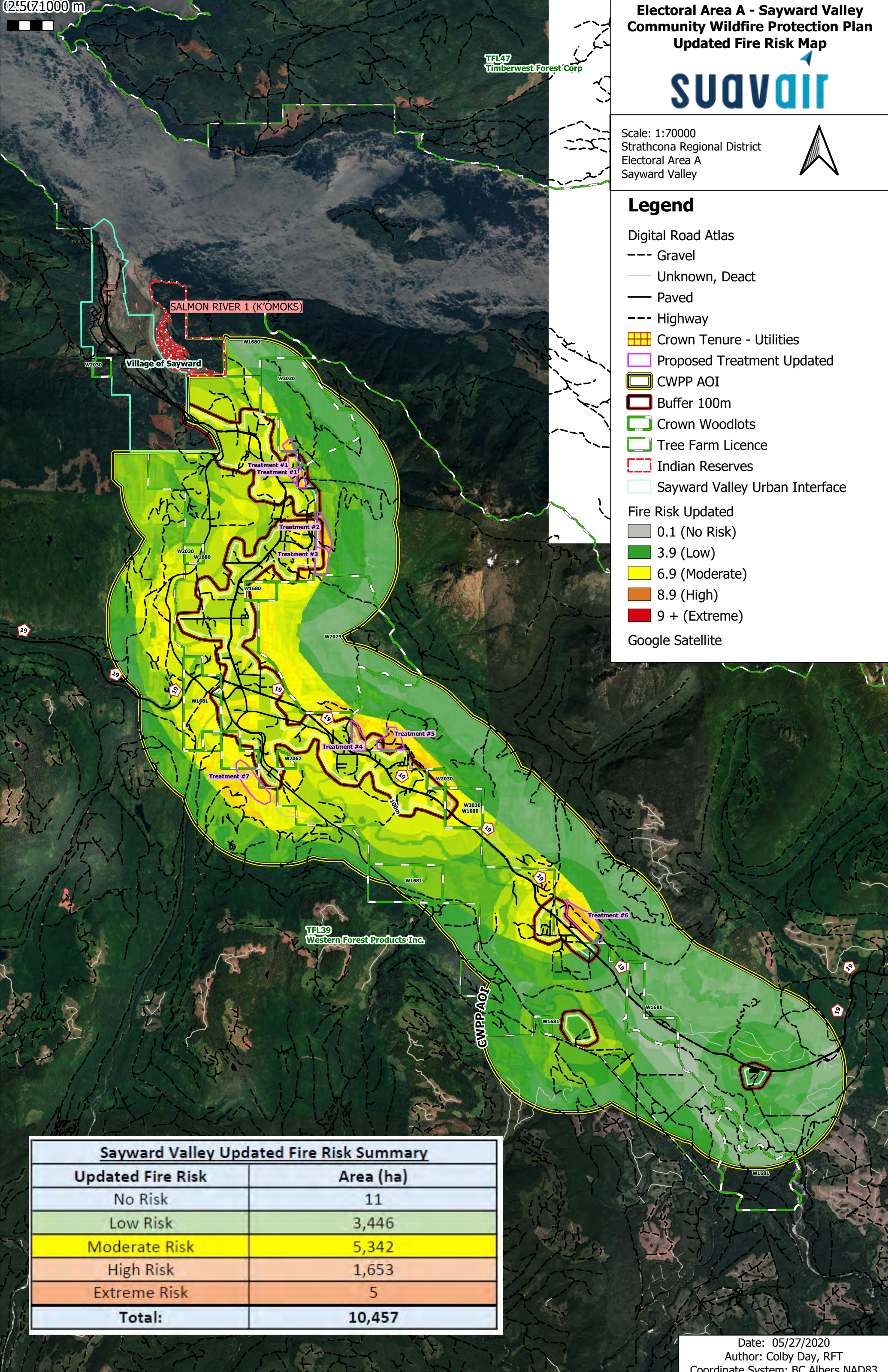
Digital Road Atlas

- Gravel
- Unknown, Deact
- Paved
- Highway
- Crown Tenure - Utilities
- Proposed Treatment Updated
- CWPP AOI
- Buffer 100m
- Crown Woodlots
- Tree Farm Licence
- Indian Reserves
- Sayward Valley Urban Interface

Fire Risk Updated

- 0.1 (No Risk)
- 3.9 (Low)
- 6.9 (Moderate)
- 8.9 (High)
- 9 + (Extreme)

Google Satellite



Sayward Valley Updated Fire Risk Summary	
Updated Fire Risk	Area (ha)
No Risk	11
Low Risk	3,446
Moderate Risk	5,342
High Risk	1,653
Extreme Risk	5
Total:	10,457

Sayward Valley CWPP
Ownership Treatment Map



Scale: 1:40000
Strathcona Regional District
Electoral Area A
Sayward Valley



Legend

Proposed Treatment Updated

Digital Road Atlas

--- Gravel

— Unknown, Deact

— Paved

--- Highway

Crown Tenure - Utilities

CWPP AOI

Tree Farm Licence

Crown Woodlots

Electoral Area

Municipality

Indian Reserves

Community Watersheds

Lakes

Major Rivers

Wetlands

Parcel Fabric

Crown Agency

Crown Provincial

Federal

First Nation

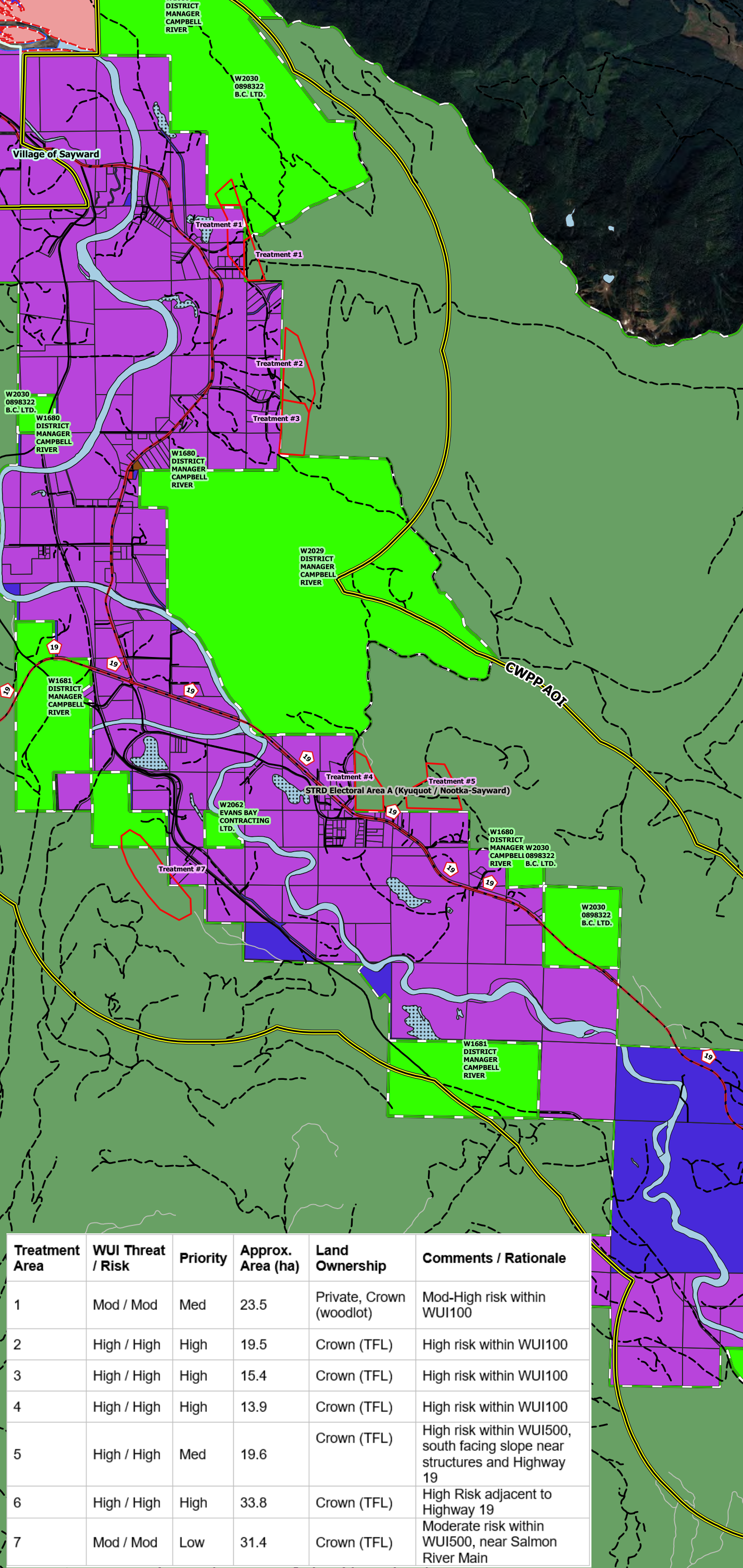
Mixed Ownership

Municipal

Private

Unknown

Google Satellite



Treatment Area	WUI Threat / Risk	Priority	Approx. Area (ha)	Land Ownership	Comments / Rationale
1	Mod / Mod	Med	23.5	Private, Crown (woodlot)	Mod-High risk within WUI100
2	High / High	High	19.5	Crown (TFL)	High risk within WUI100
3	High / High	High	15.4	Crown (TFL)	High risk within WUI100
4	High / High	High	13.9	Crown (TFL)	High risk within WUI100
5	High / High	Med	19.6	Crown (TFL)	High risk within WUI500, south facing slope near structures and Highway 19
6	High / High	High	33.8	Crown (TFL)	High Risk adjacent to Highway 19
7	Mod / Mod	Low	31.4	Crown (TFL)	Moderate risk within WUI500, near Salmon River Main

0 250 500 750 1000 m

Date: : 06/05/2020
Author: Colby Day, RFT
Coordinate System: BC Albers NAD83